

***Economic Conditions
in the Nation and Oregon***

Art Ayre

State Employment Economist

Oregon Employment Department

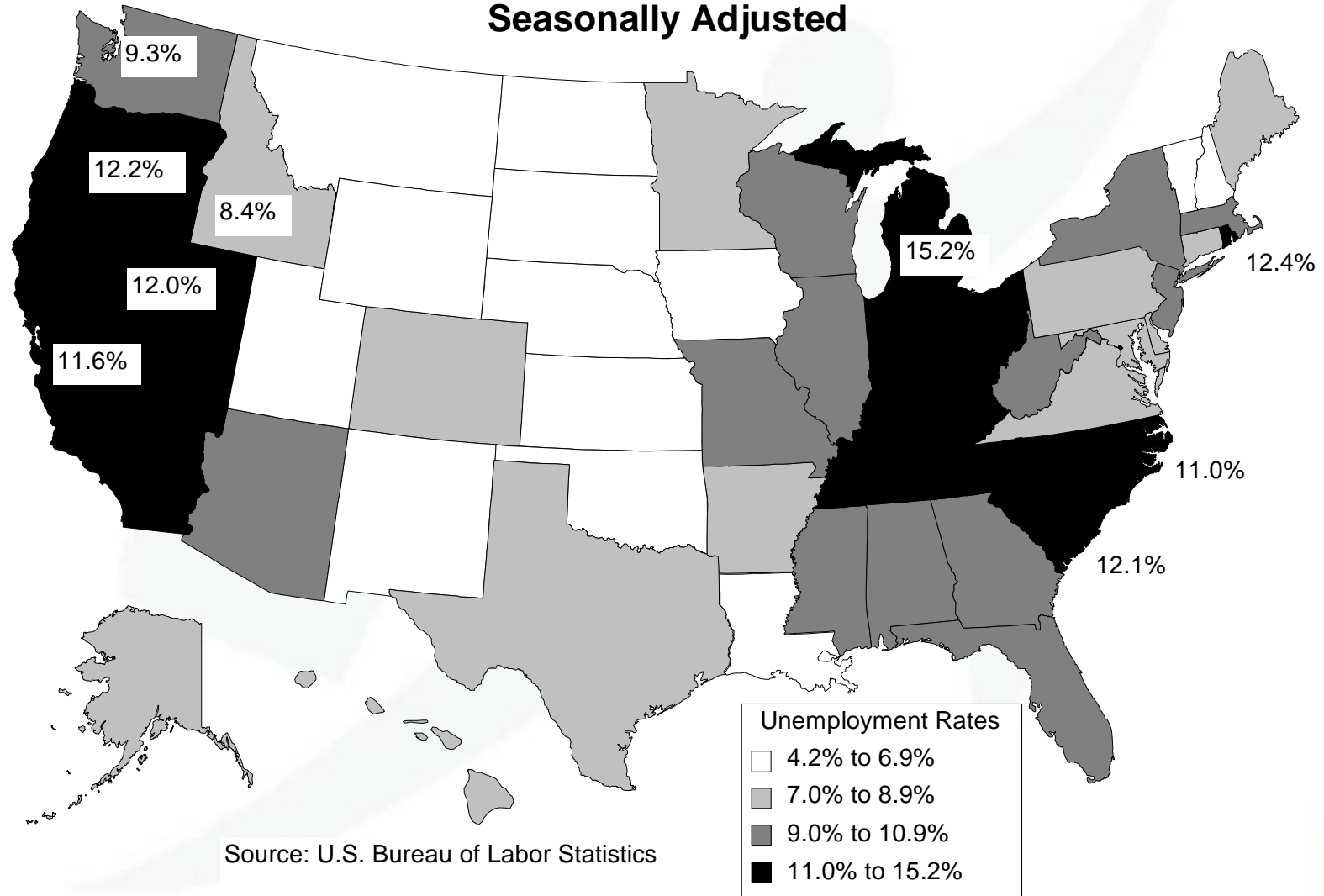
August 13, 2009

Support Business & Promote Employment

www.WorkSourceOregon.org



June 2009 Preliminary Unemployment Rates Seasonally Adjusted



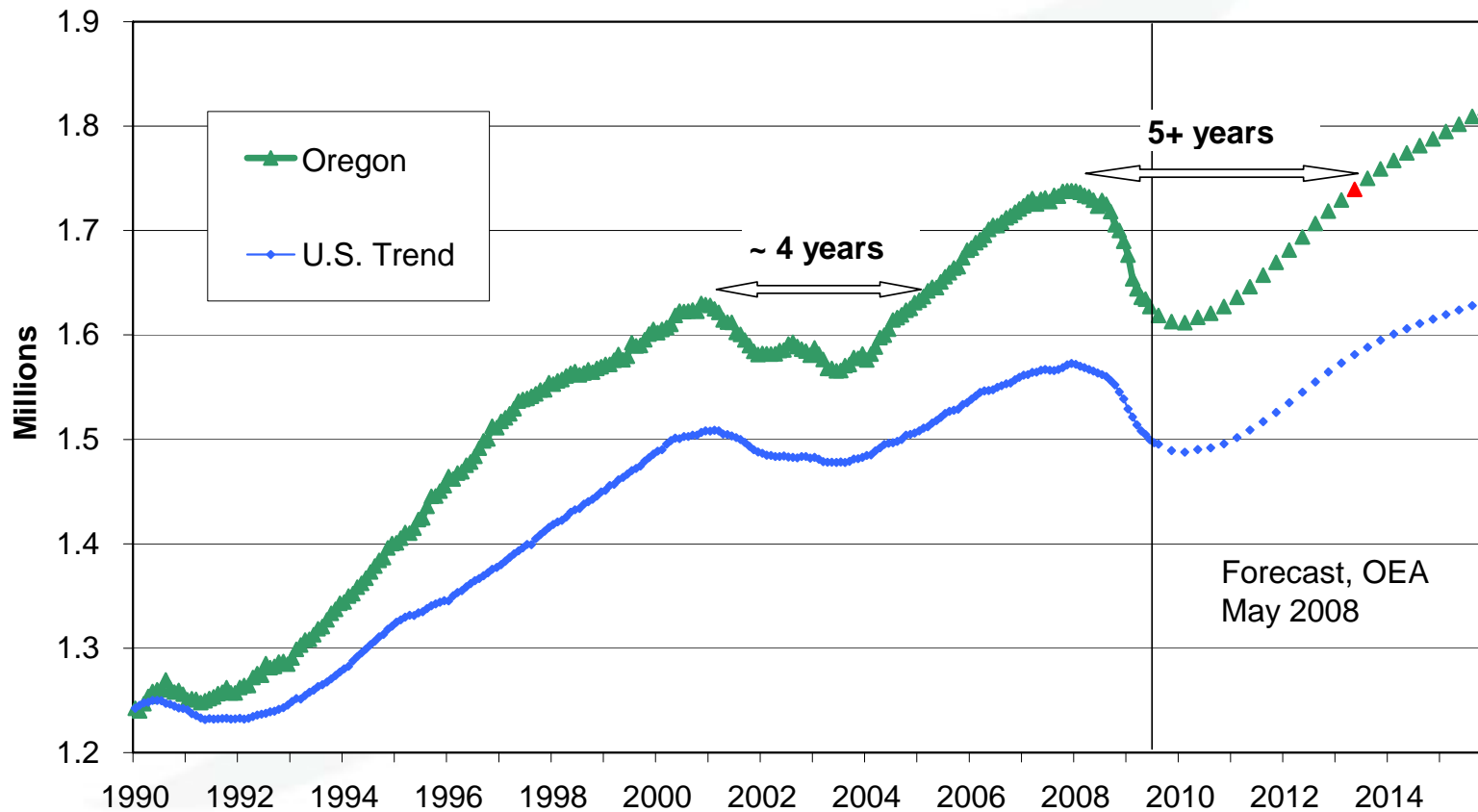
Source: U.S. Bureau of Labor Statistics

U.S. = 9.5%



Recent past: job declines and reduced hours. Almost done?

Oregon Employment Trends* U.S. Trend Indexed to Oregon's Jan. 1990 Level

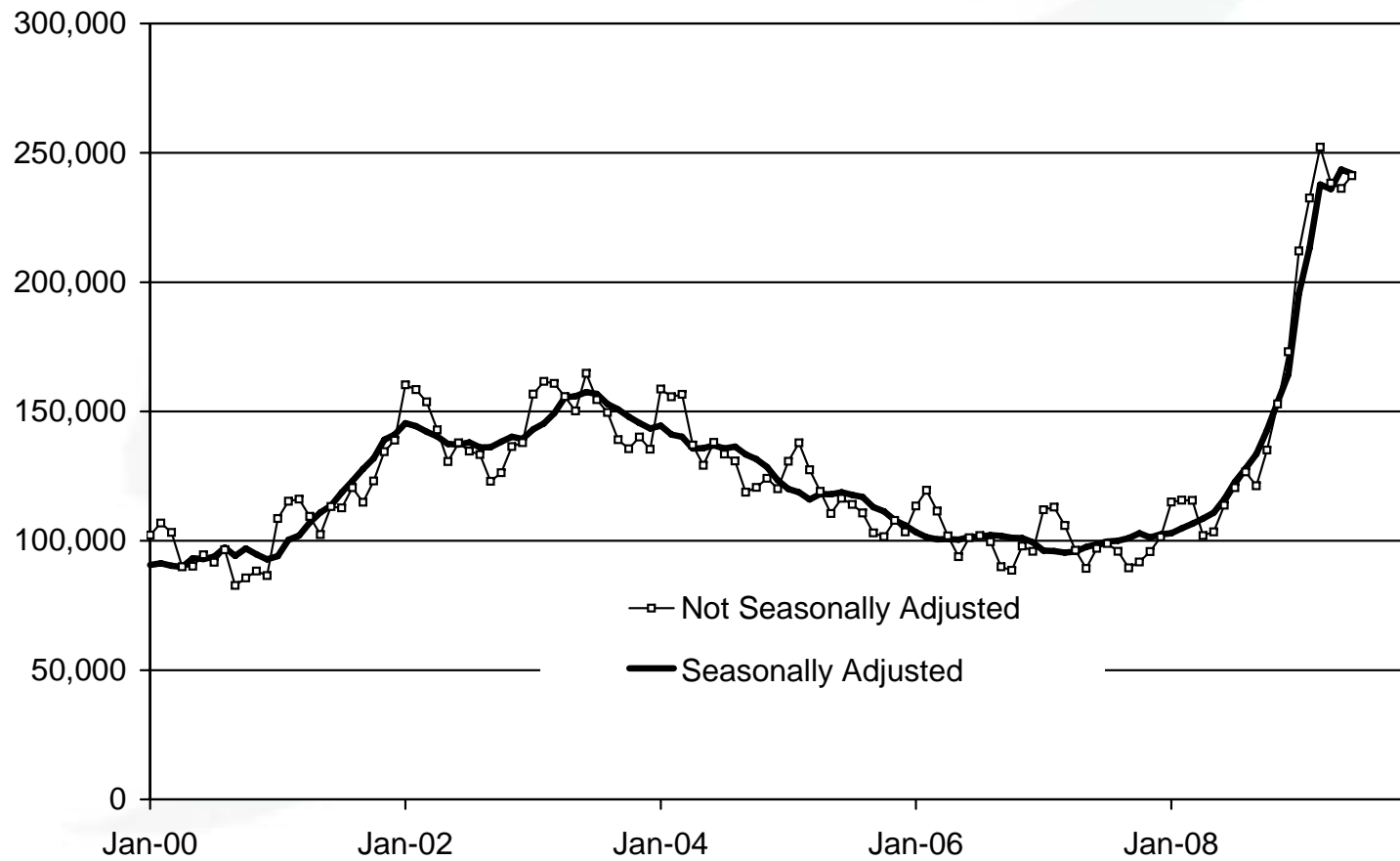


* Seasonally adjusted nonfarm payroll employment.



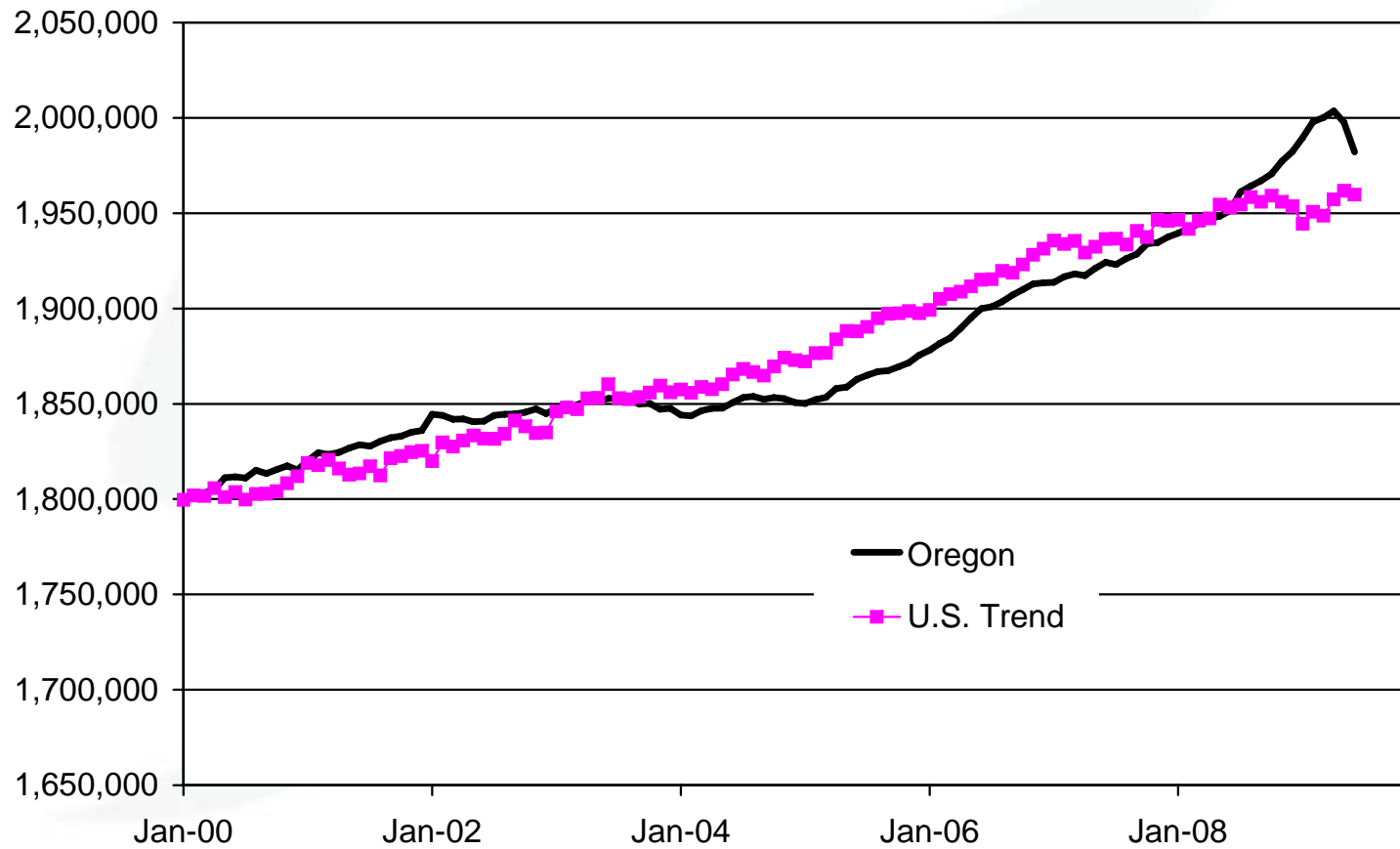
With job declines, more people unemployed

Oregon Total Unemployment



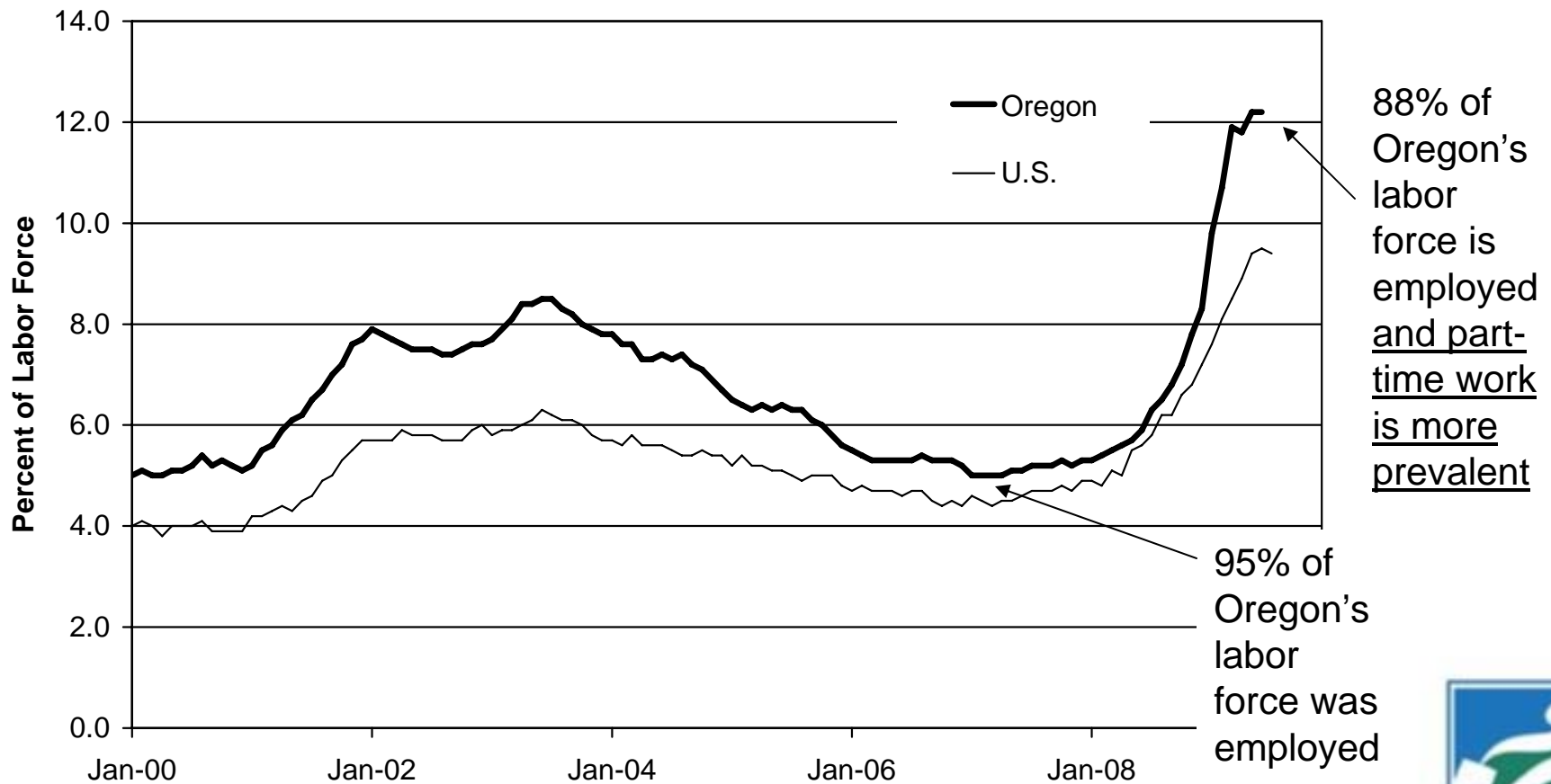
Oregon's labor force grew, then fell

Oregon Labor Force Seasonally Adjusted



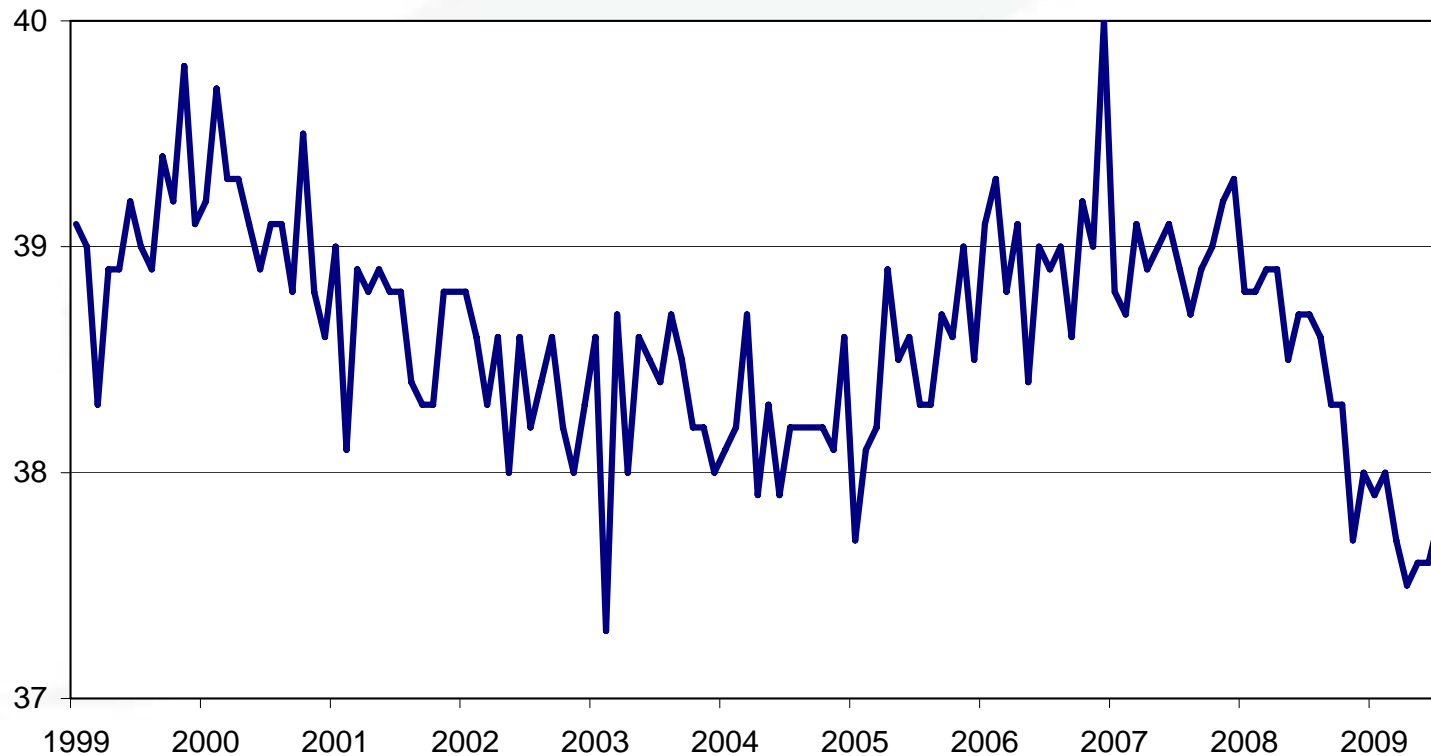
Unemployment rate rose rapidly!

Seasonally Adjusted Unemployment Rates



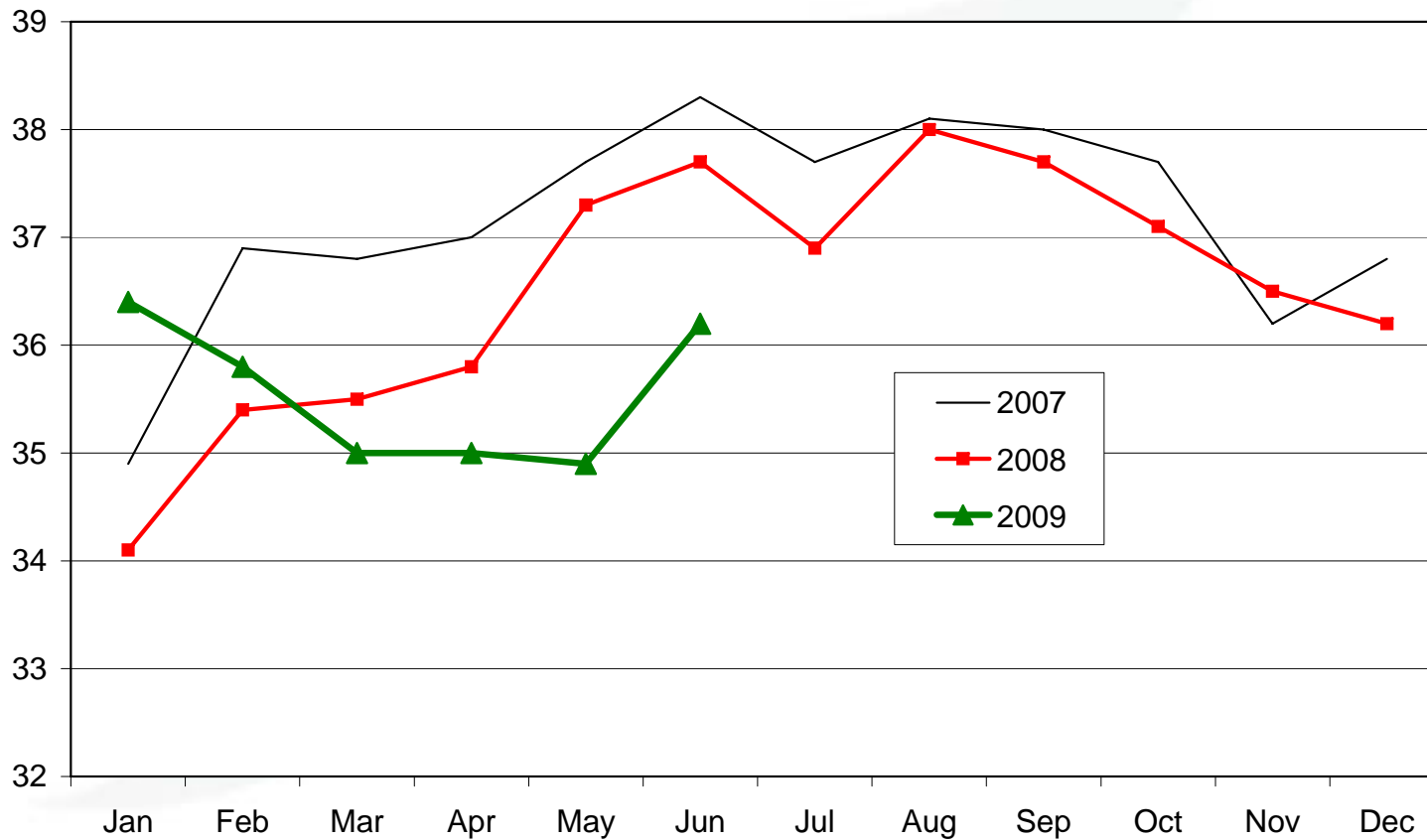
Average workweek in construction is down

**U.S. Average Weekly Hours Worked
by production and nonsupervisory workers
in the construction industry, seasonally adjusted**



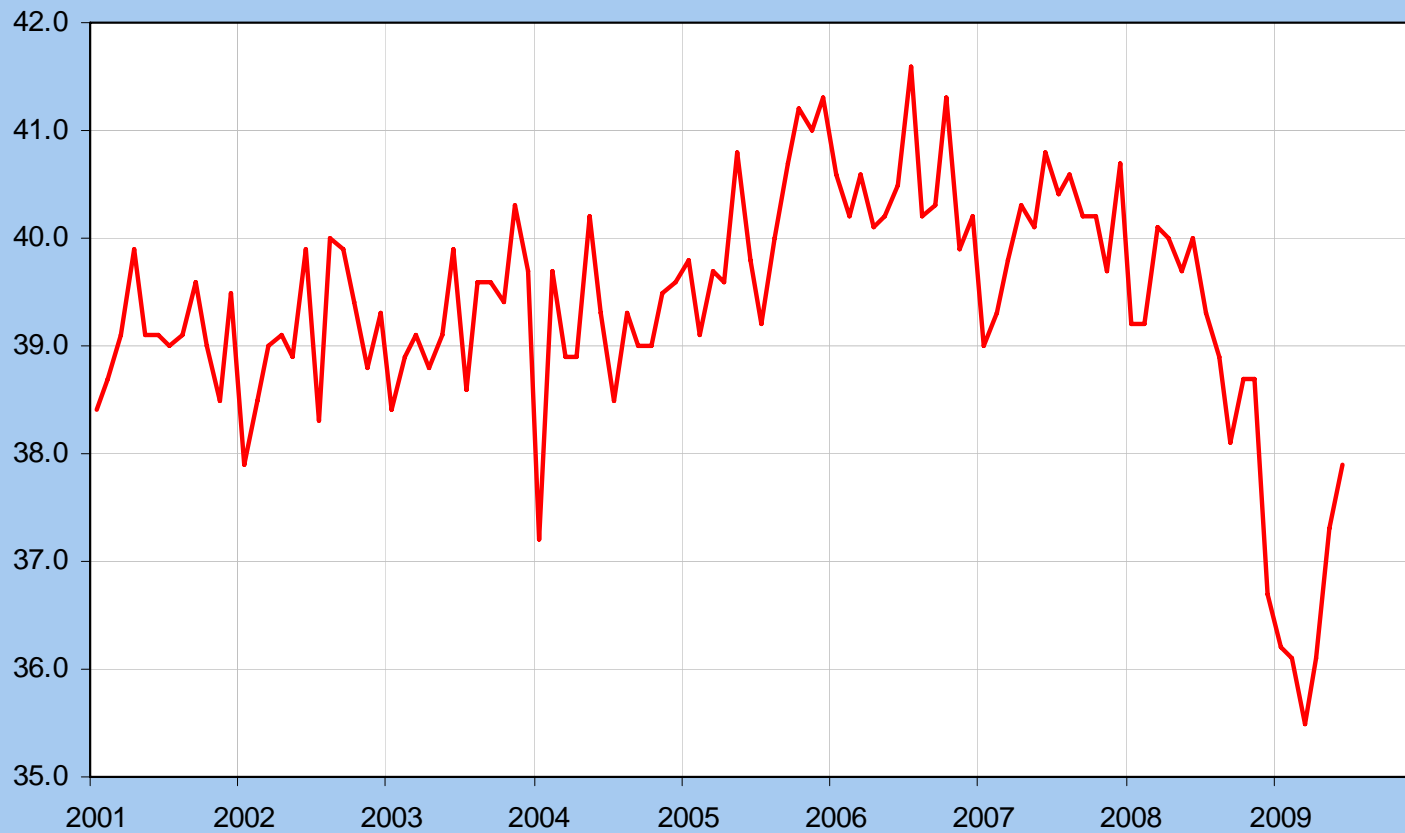
Average workweek in construction is lower than year-ago levels

Oregon Average Weekly Hours Worked in Construction All Workers

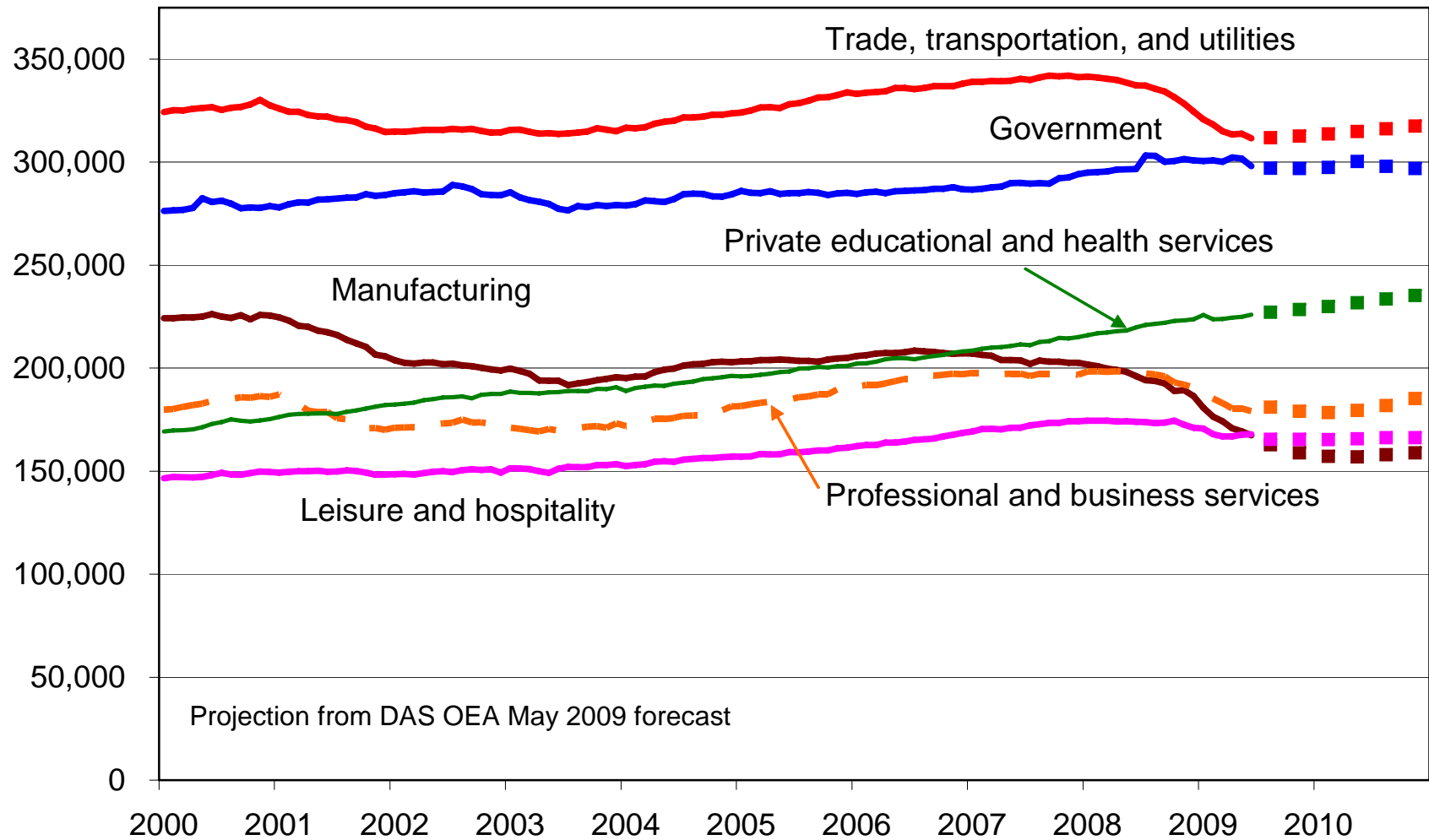


Manufacturing average weekly hours fell

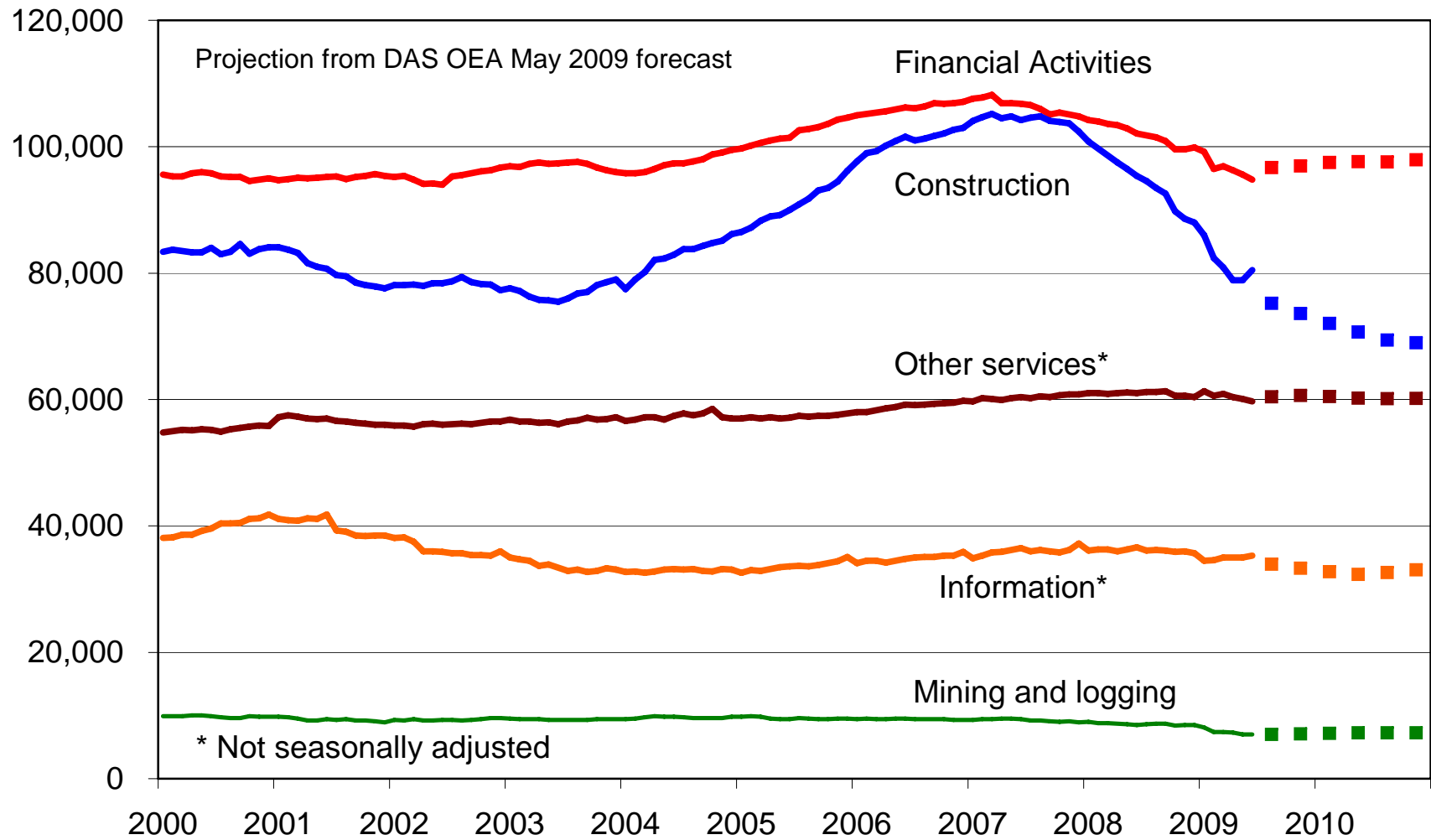
Oregon: Manufacturing. Average weekly hours of production workers



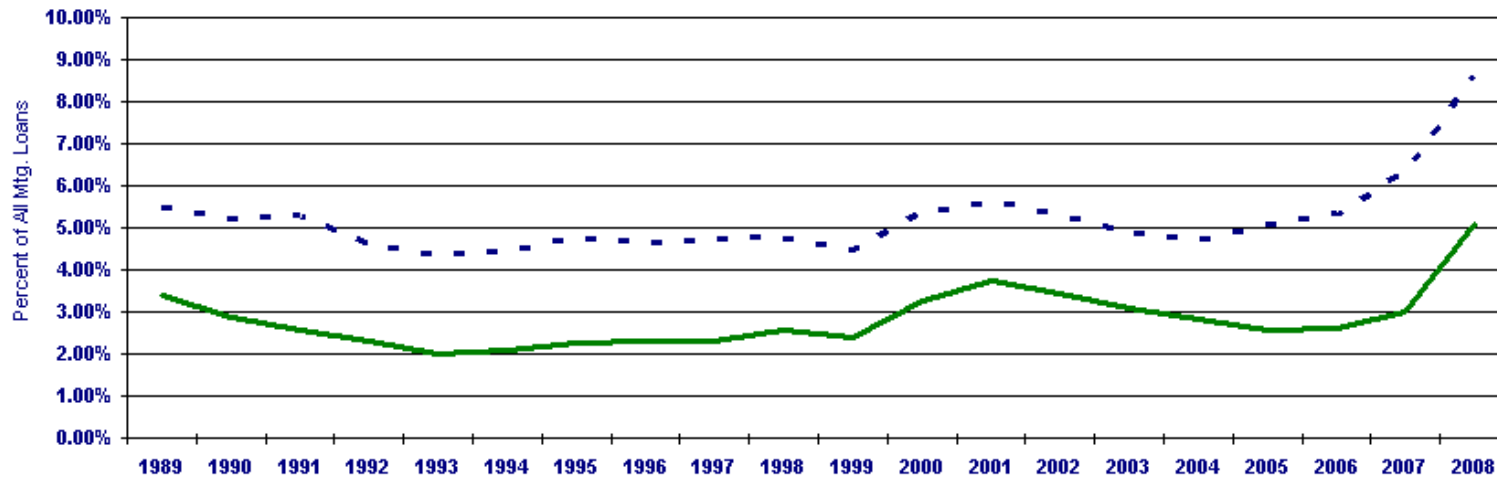
Nonfarm Payroll Employment, Selected Industries Oregon, Seasonally Adjusted



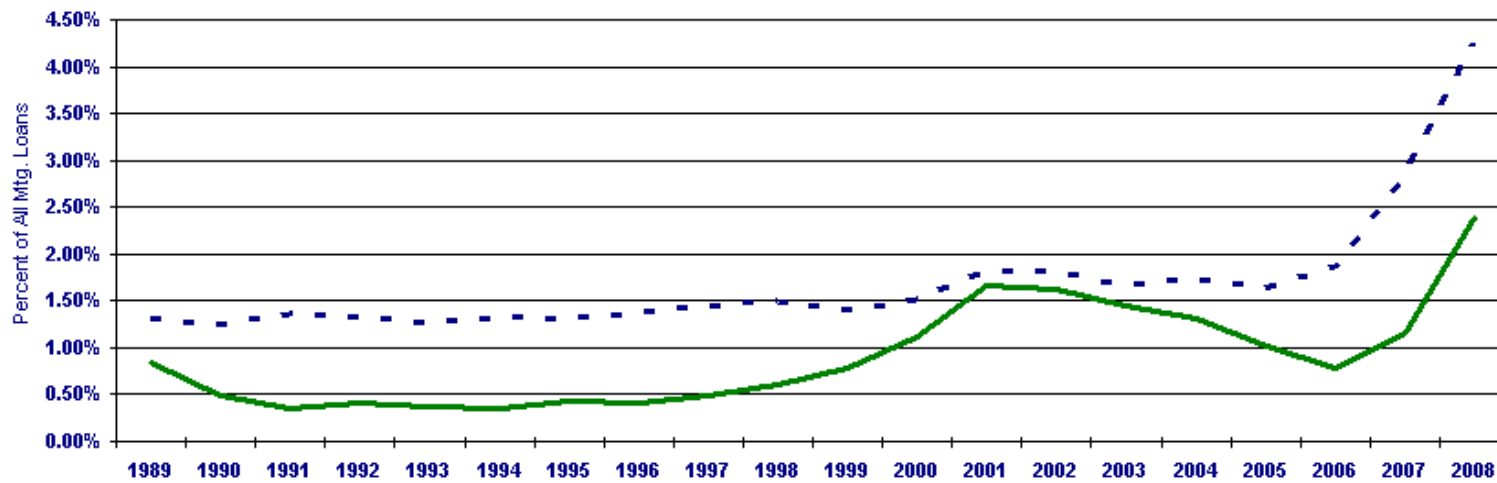
Nonfarm Payroll Employment, Selected Industries Oregon, Seasonally Adjusted



Total Mortgage Delinquencies, Oregon



Foreclosures Started, Oregon

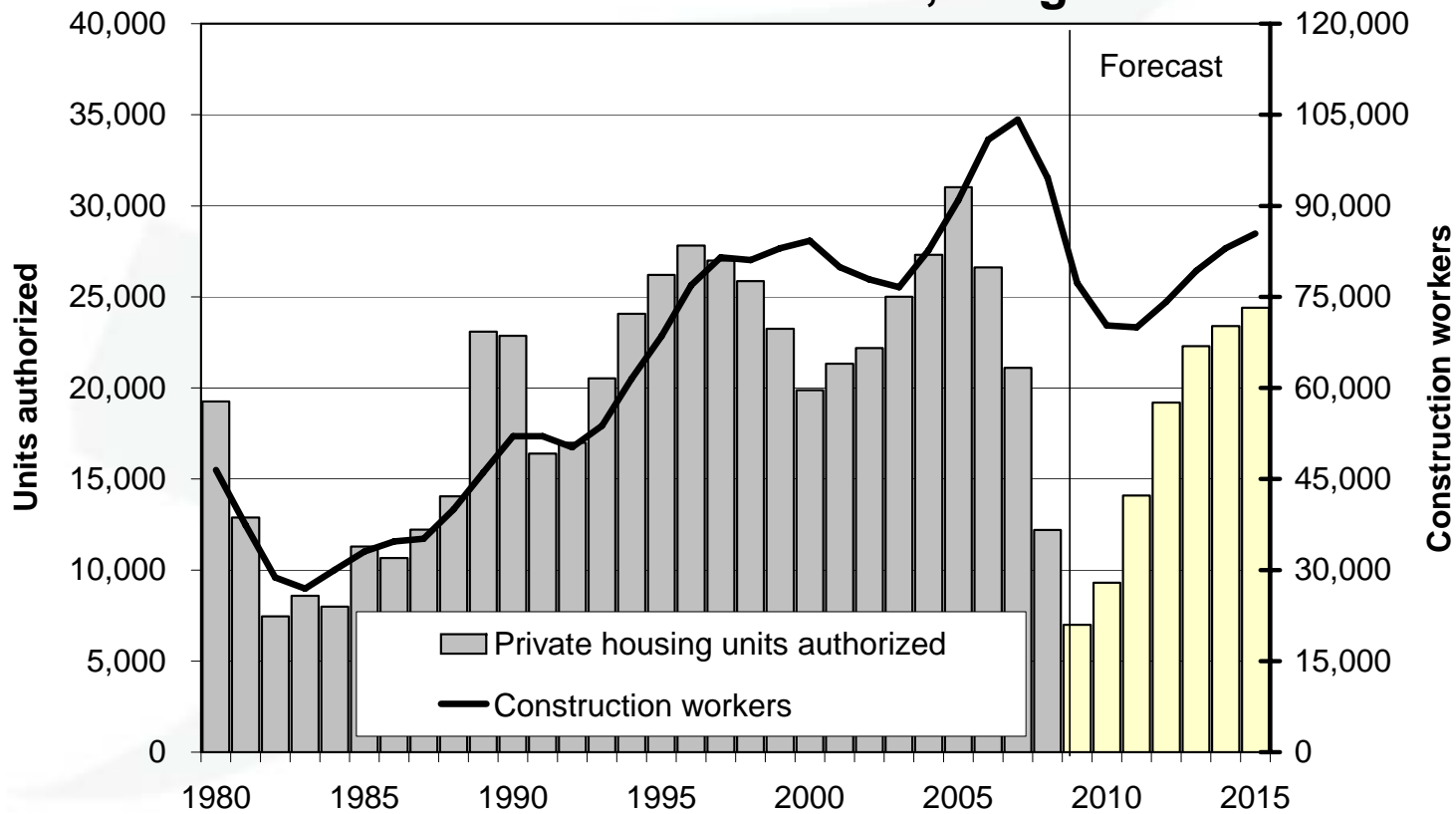


NSA = Not Seasonally Adjusted. Recessions: 4/01 - 11/01 and 8/90 - 3/91.
 Source: Mortgage Bankers Association of America (Haver Analytics) Created 6/1/2009 2:06:07 PM

■ United States (NSA) ■ Oregon (NSA)

Employment tends to follow permits

New privately owned housing units authorized vs. construction workers, Oregon

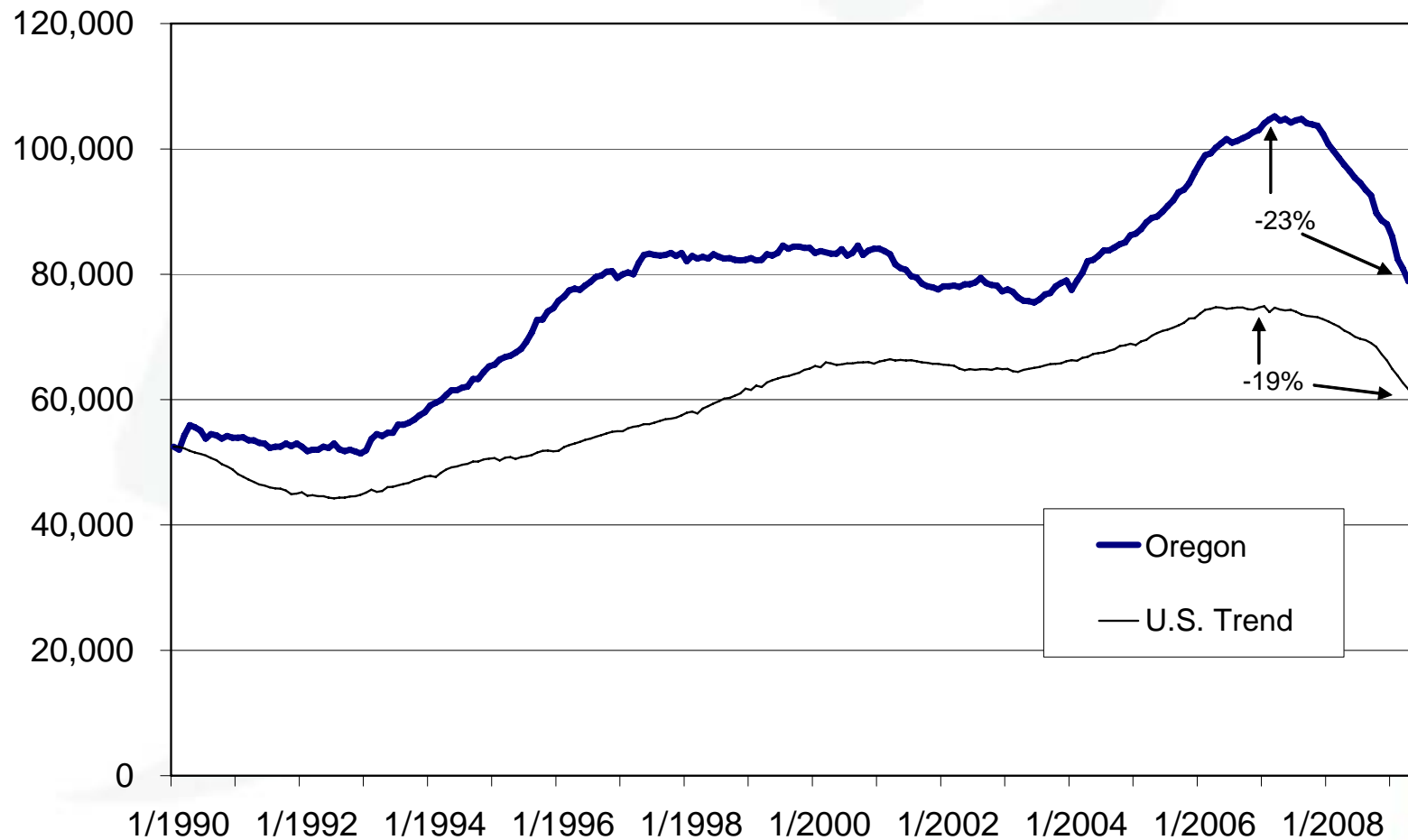


Sources: U.S. Census Bureau; Oregon Employment Dept.; DAS Office of Economic Analysis, May 2009 forecast.



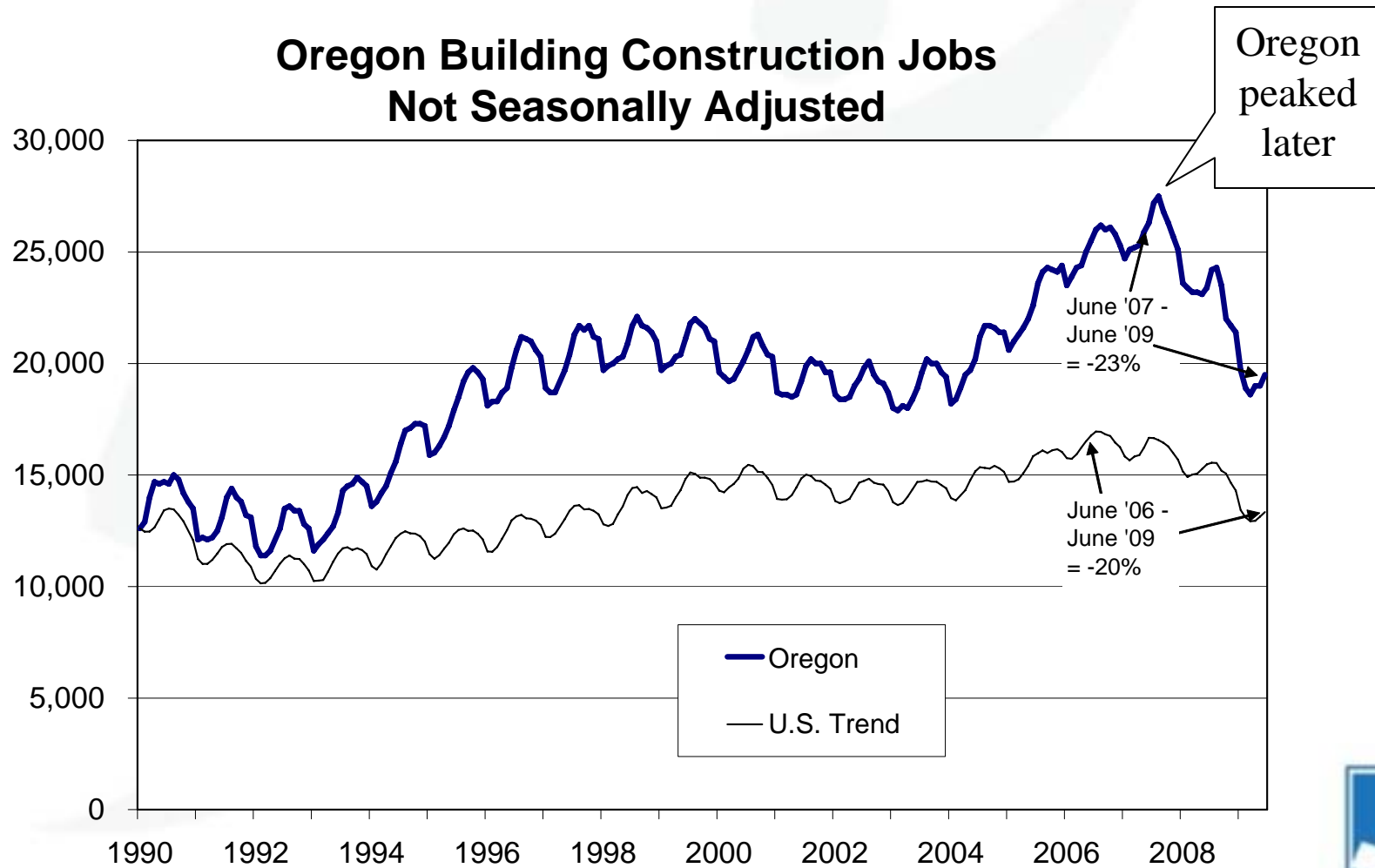
Oregon's job loss was a bit steeper

Oregon Construction Jobs, Seasonally Adjusted



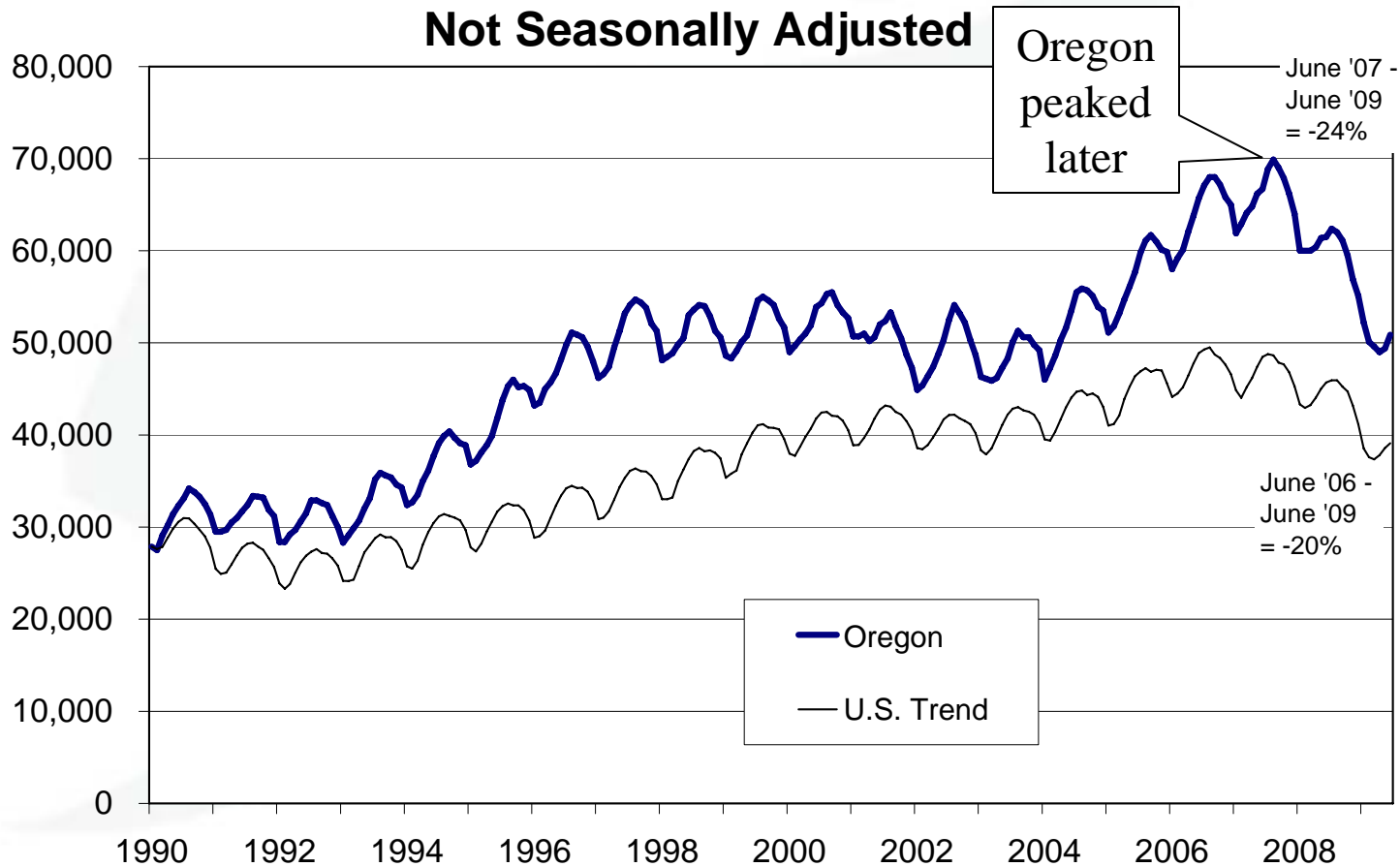
Oregon building construction was more cyclical than the U.S.

Oregon Building Construction Jobs Not Seasonally Adjusted



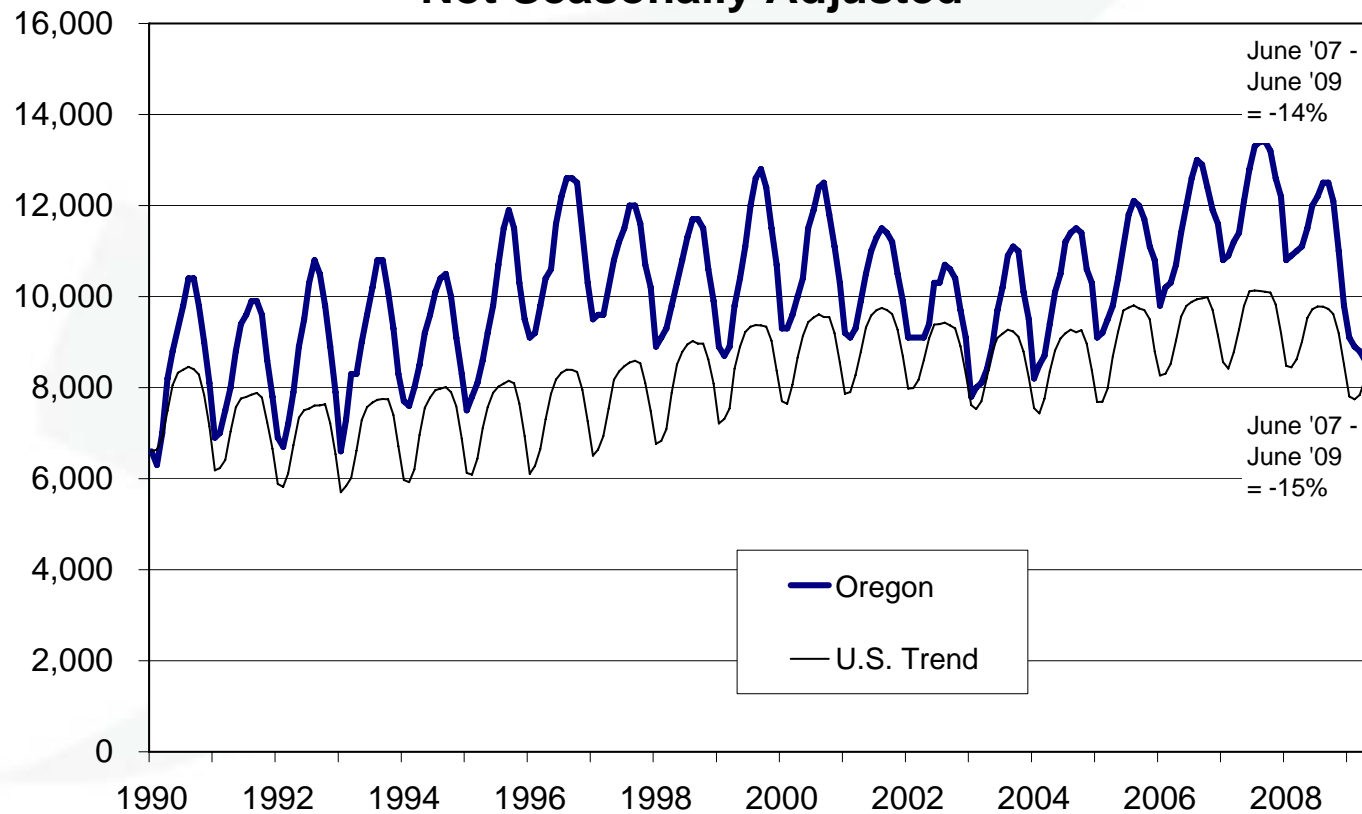
Oregon specialty trade was also more cyclical than the U.S.

Oregon Specialty Trade Construction Jobs Not Seasonally Adjusted



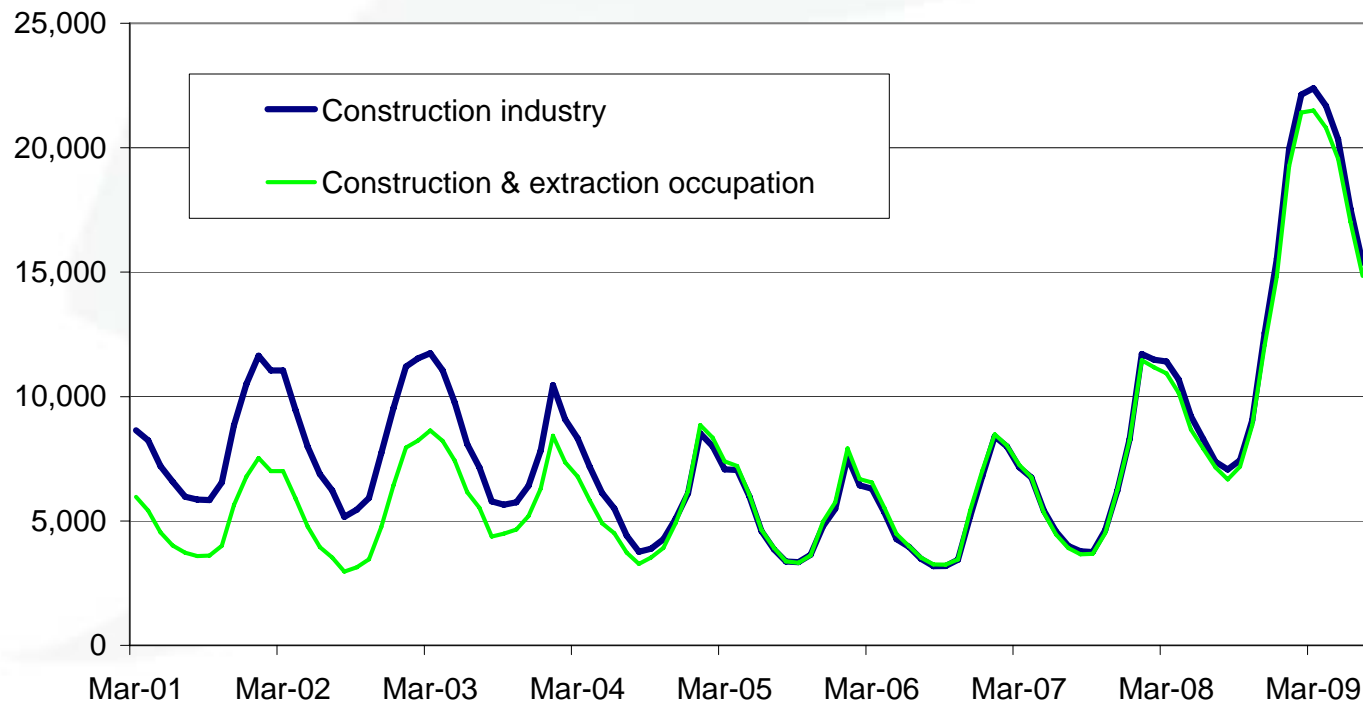
Oregon heavy & engineering construction lost about the same percentage as the U.S.

Oregon Heavy & Engineering Construction Jobs Not Seasonally Adjusted



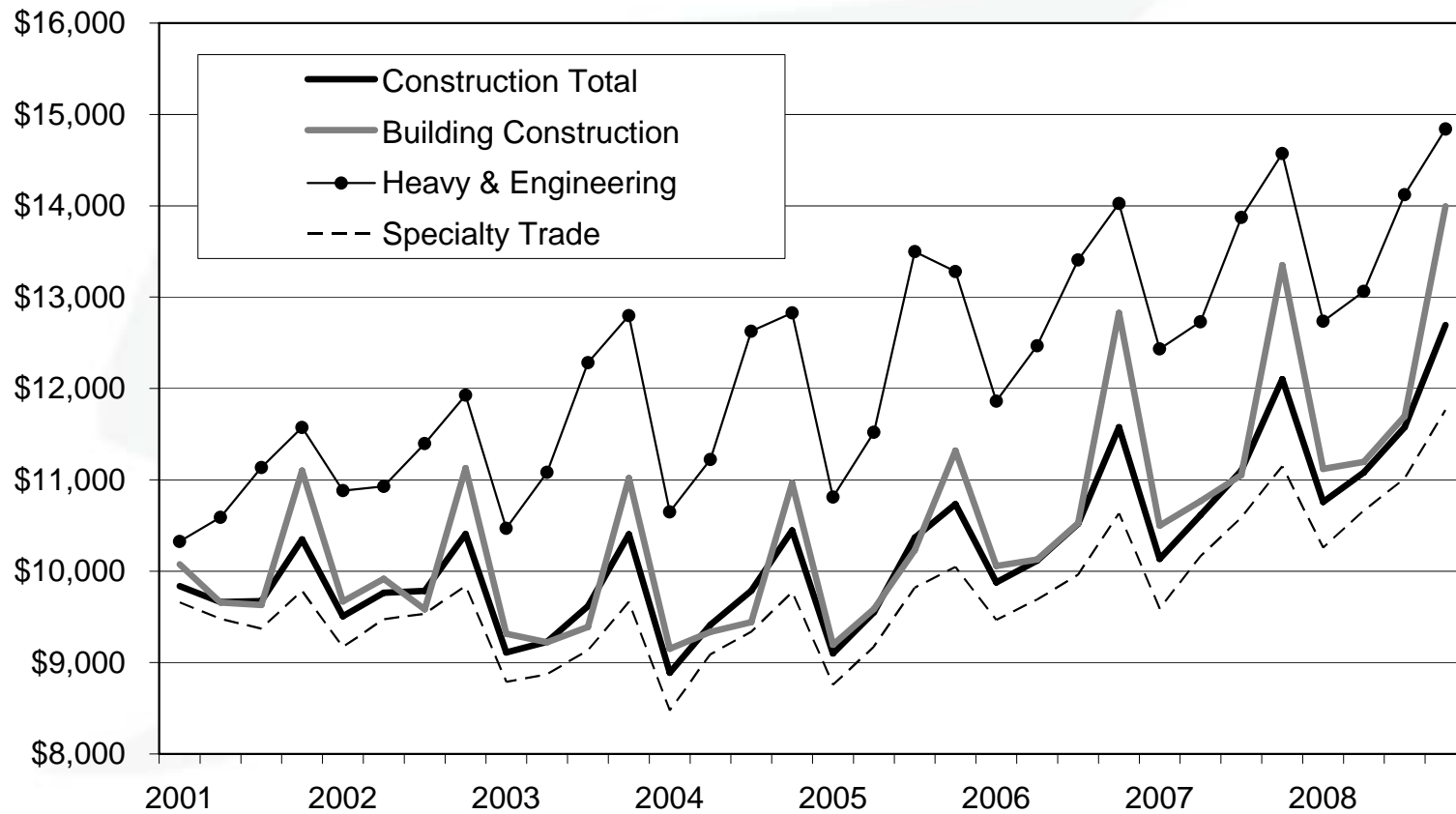
Construction UI claims are way up; they weren't in the last recession

**Oregon unemployment insurance claims
from the construction industry & occupation,
Regular Program**



Oregon construction average pay rose

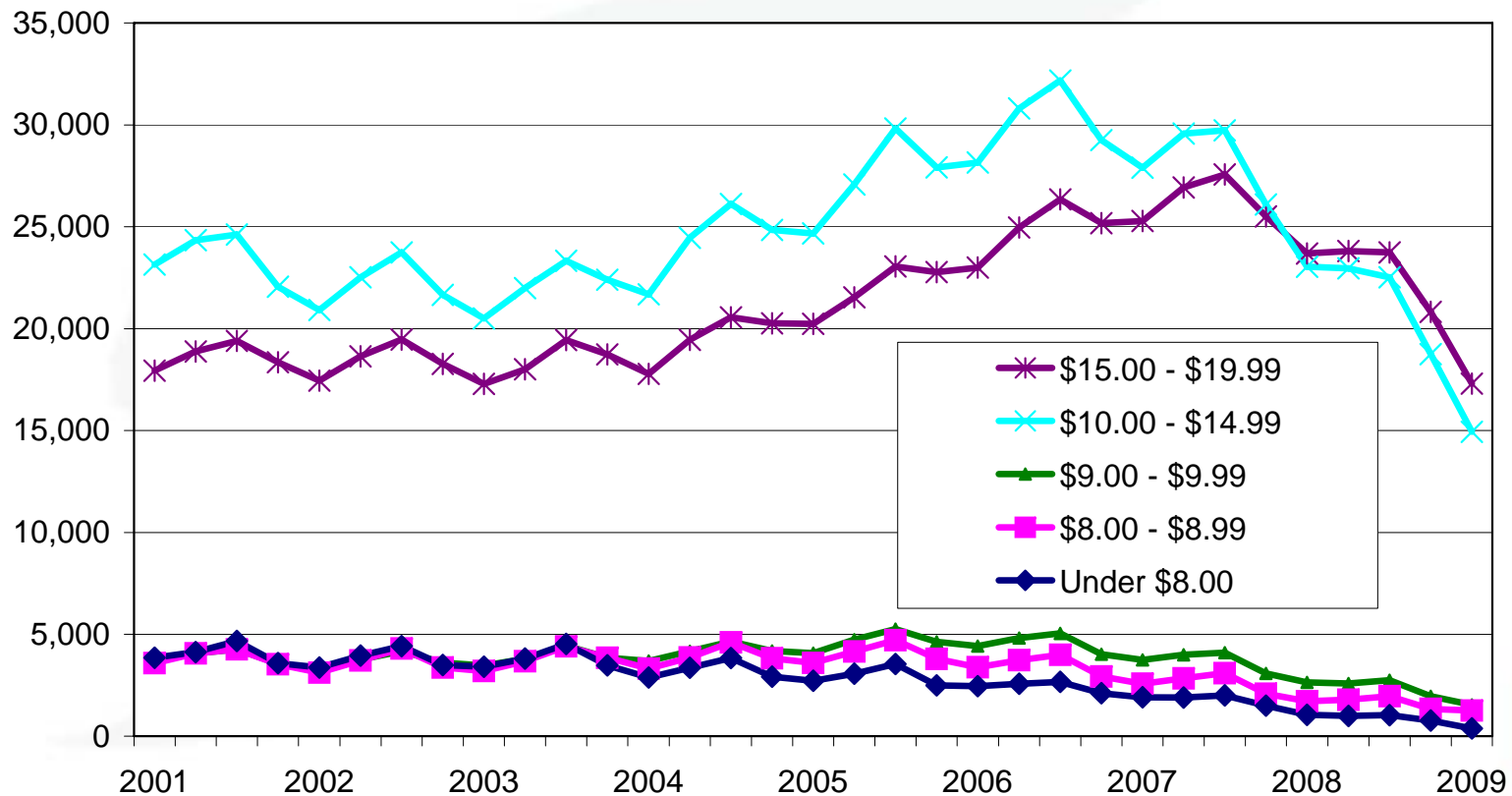
Oregon Construction Industry Average Quarterly Pay per Worker



Large loss of lower-wage jobs in Oregon's construction industry

Oregon Construction Industry Jobs by Hourly Pay by Quarter (<\$20/hr)

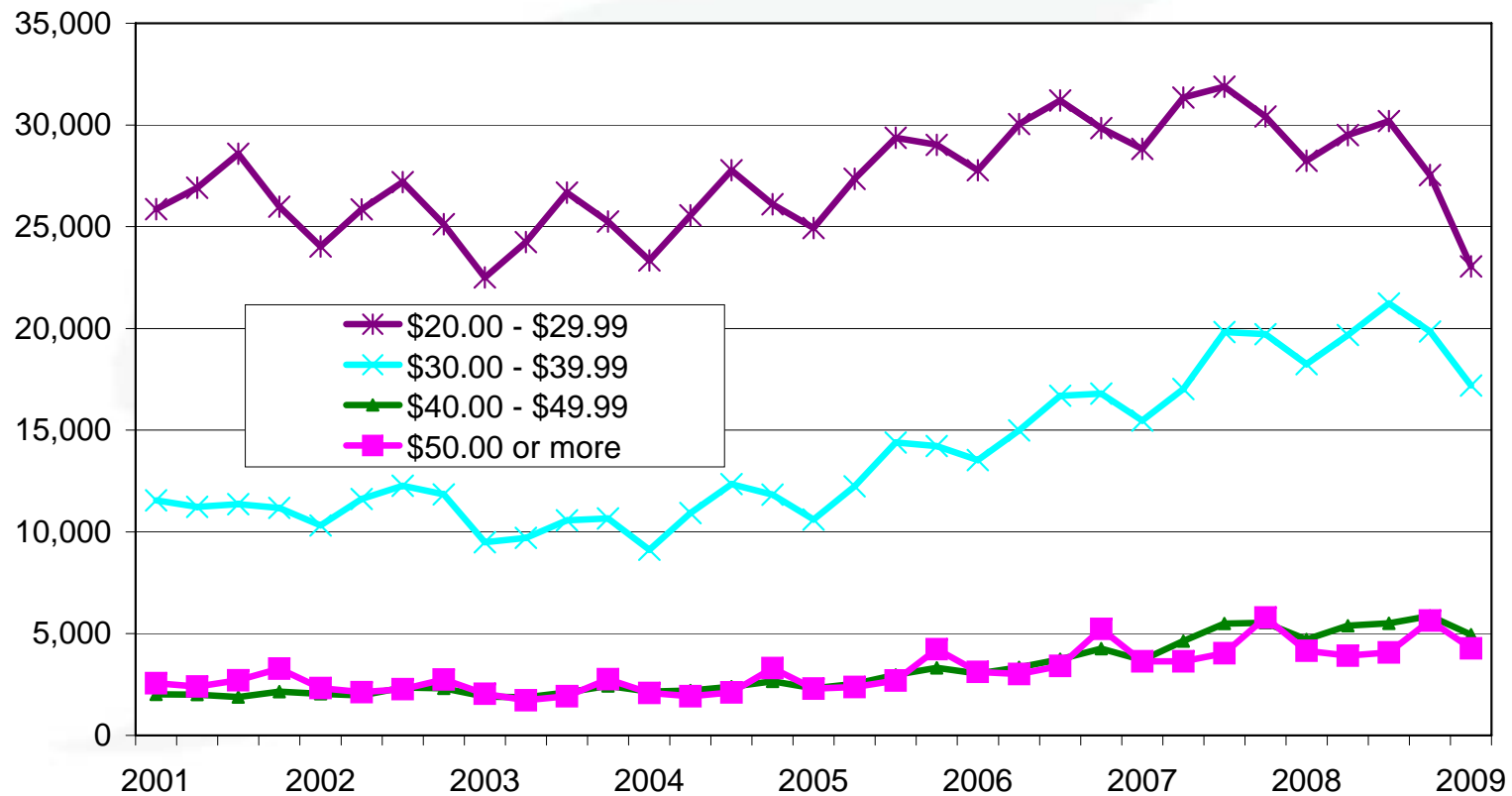
First quarter 2009 data are preliminary



Some loss of middle-wage jobs, too

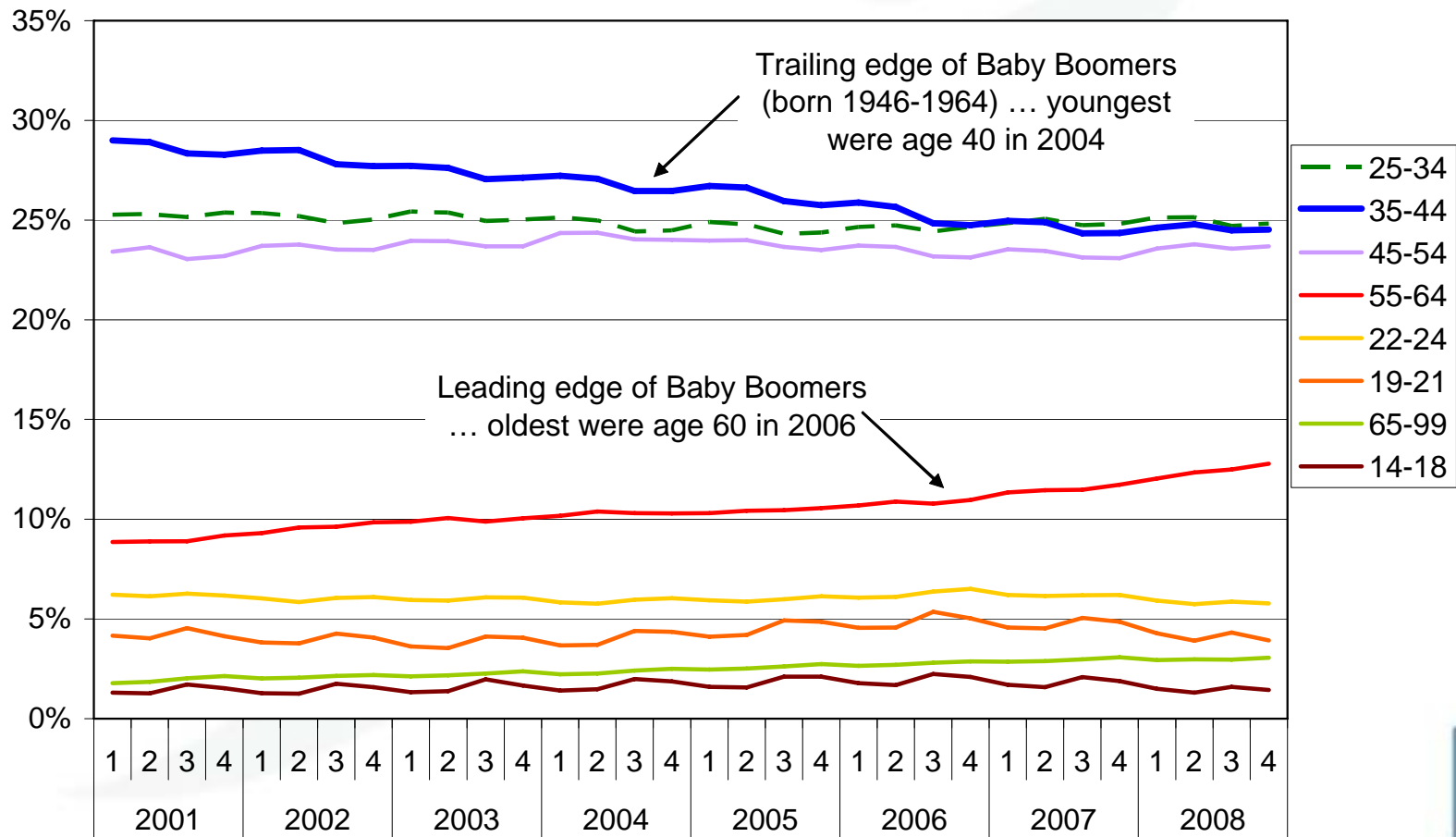
Oregon Construction Industry Jobs by Hourly Pay by Quarter (\$20+/hr)

First quarter 2009 data are preliminary



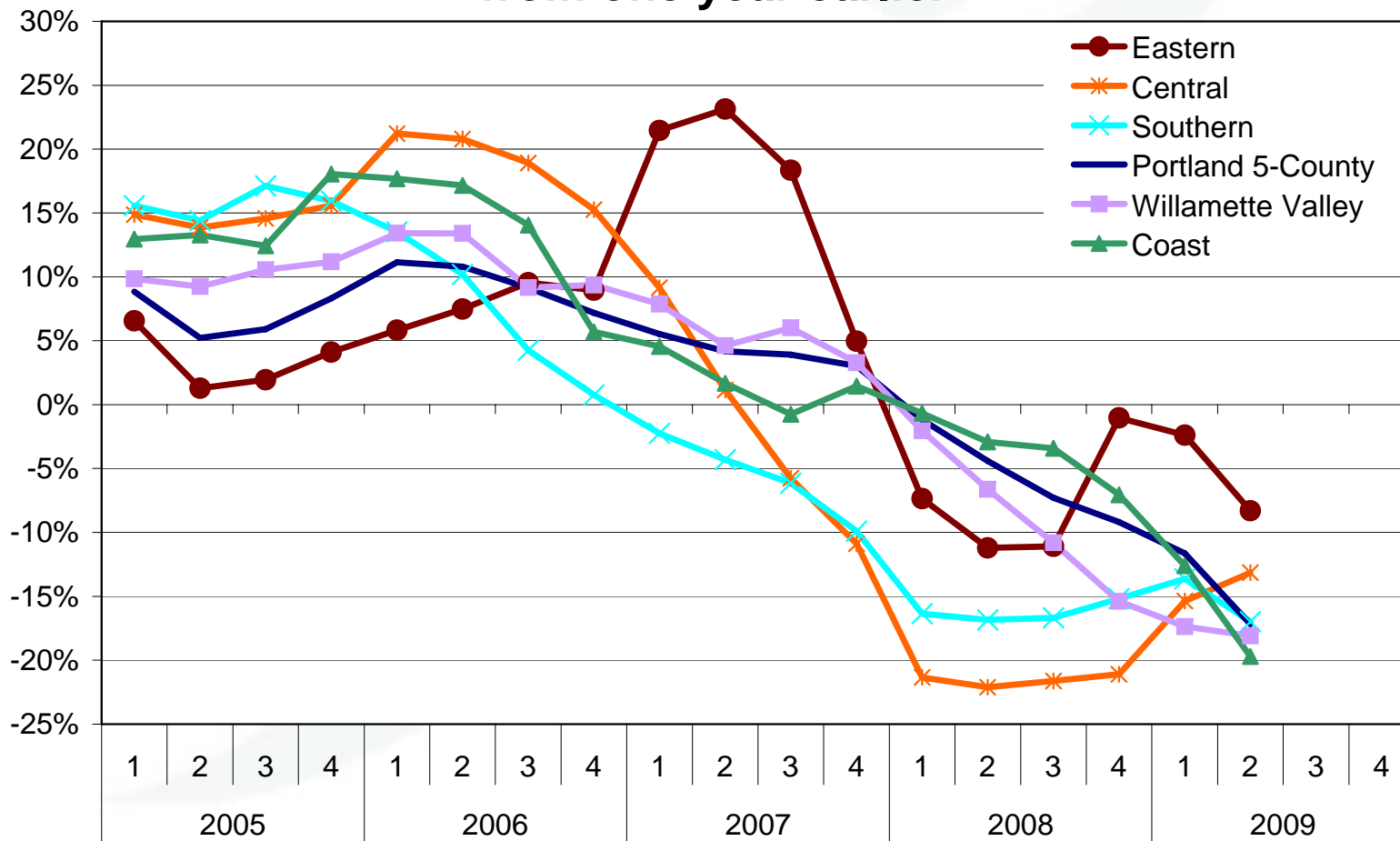
Boomers are moving through

Construction Employment In Oregon by Age Percent of Total, 2001-2008



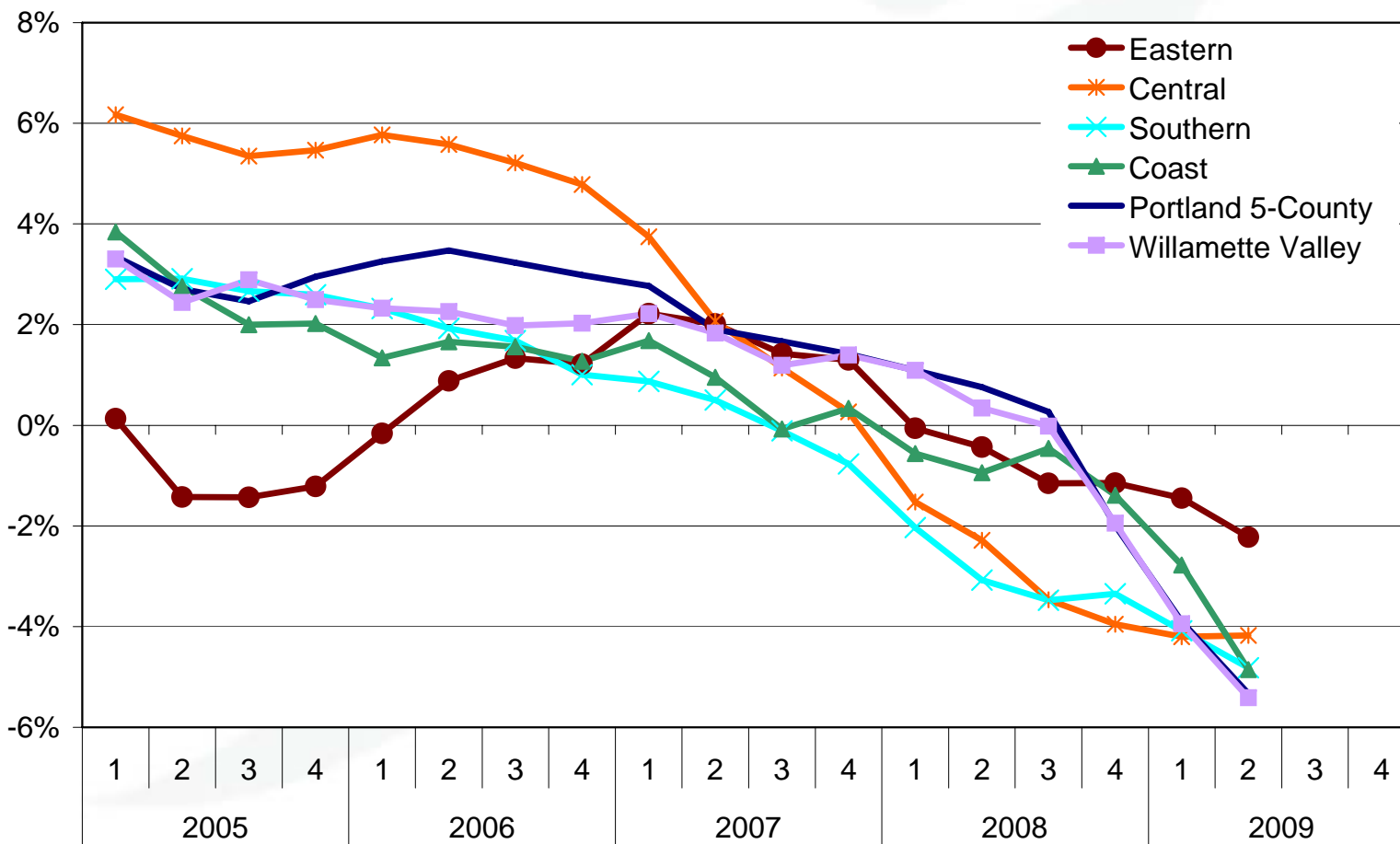
Construction job loss throughout the state

Construction industry job growth from one year earlier



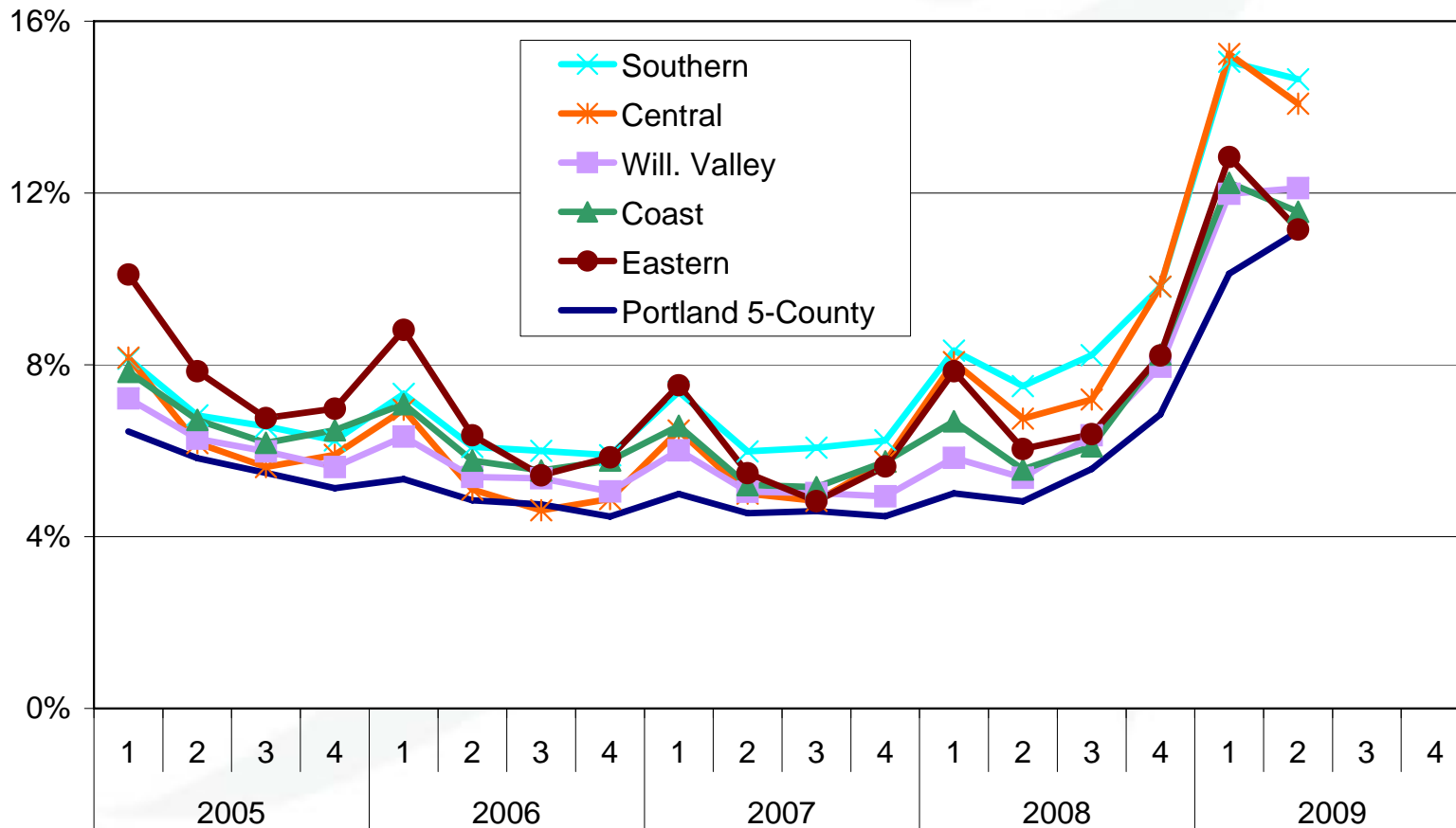
Over-the-year job loss in all regions

Nonfarm payroll job growth from one year earlier



Regional unemployment rates up sharply

Unemployment Rates by Region
not seasonally adjusted



The future: continued recession, then recovery

- May 2009 statewide forecast from Oregon's Office of Economic Analysis:
 - Net job loss through 1st quarter of 2010
 - Then slow-to-moderate growth
- 2006-2016 projections by Oregon Employment Dept:
 - About 14% growth for Oregon
 - Expect lots of retirements, occupational openings



Thank you!
For more information:

Art Ayre

State Employment Economist

(503) 947-1268, Art.L.Ayre@state.or.us

Visit our web site at: www.QualityInfo.org

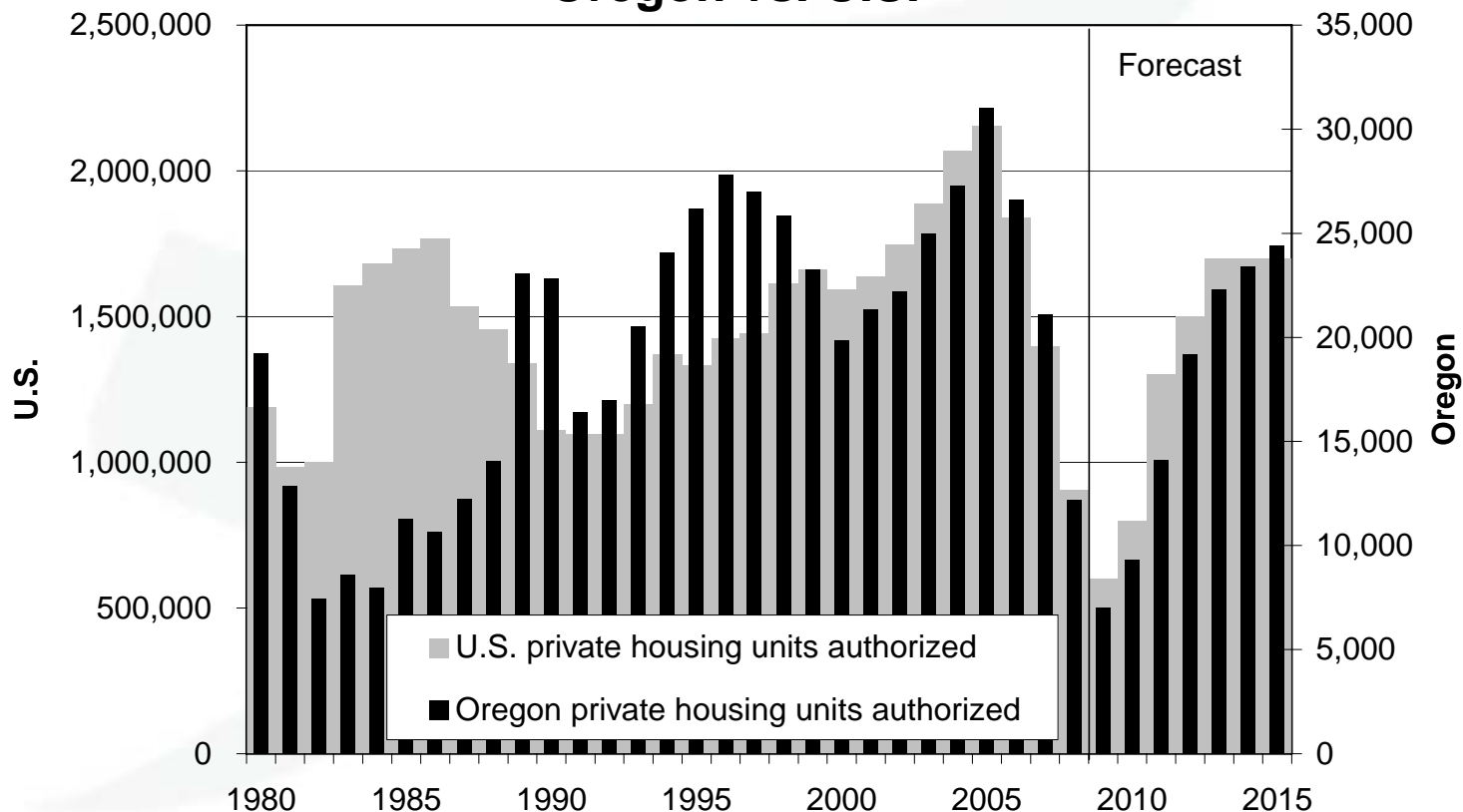
Support Business & Promote Employment

www.WorkSourceOregon.org



From 2005 to 2008, building permits dropped by 61% in Oregon, 58% in the U.S.

New privately owned housing units authorized Oregon vs. U.S.



Sources: U.S. Census Bureau; Oregon Employment Dept.; DAS Office of Economic Analysis, May 2009 forecast.

